

FILTERMAG®

INDUSTRIAL PRODUCTS DIVISION

1-800-FilterMag
www.filtermag.com

FILTER-MAG-PLUGS

ENHANCED MAGNETIC FILTRATION PLUGS

**Unique design captures & removes
more metal particles from your oil!**

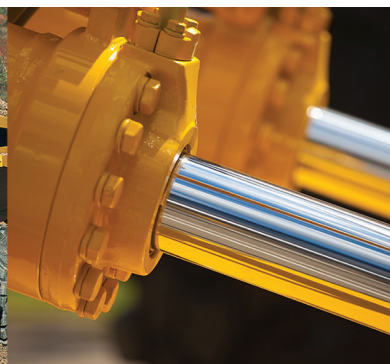
Lowers maintenance costs!

Extends equipment life!

**New
Improved
Design**



Patent Pending



**Better
Designs!
Easier to
Use!**

EASY INSTALLATION - CLEANER REMOVAL - REUSEABLE

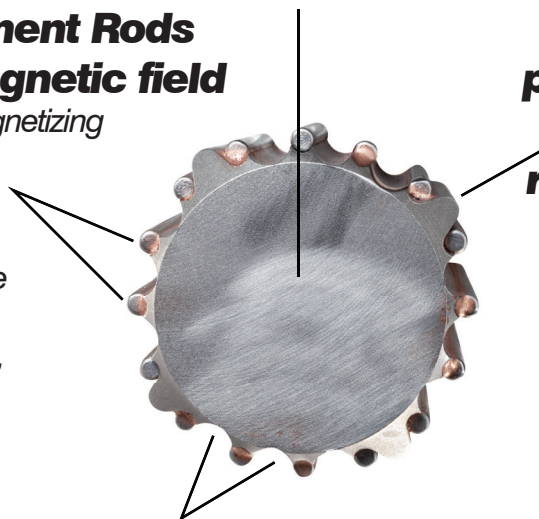
Extremely Powerful Magnetic Core

N42 Neodymium Magnets

Temperature rated from -40°F to 302°F (-40°C to 150°C)

Magnetic Enhancement Rods help contain the magnetic field

Get closer to gears without magnetizing them. As close as 1" with a 1" diameter magnet in an enhanced drain plug vs. 4" on a standard smooth version. The magnetic field is also 3-5 times stronger than the standard plug, capturing more particles and holding them better.



Self-Centering Fins provide easy installation, cleaner removal, and reduced thread cleaning prior to reinstallation

The magnetic plug remains centered for easy threading. Magnets also stay centered in the threads minimizing particle contact with the casing during removal. This minimizes particles in the threads upon removal and provides easier reinstallation.




Particle Channels hold more particles

The enhanced drain plug channels securely holds particles between the rods and out of the oil flow until the plug is removed, wiped clean, and easily reinstalled.

FILTER-MAG-PLUGS

ENHANCED MAGNETIC FILTRATION PLUGS

MAGNETIC TUBE TYPES

Standard Thread Types:	Smooth	Centering Fins	Centering Fins With Enhancement Rods
<i>NPT - National Pipe Taper</i> <i>NPP - National Pipe Parallel</i> <i>ANSI - American National Standards Institute</i> <i>BSPP - British Parallel</i> <i>BSPT - British Taper</i>		 Patent Pending	 Patent Pending
Powerful N42 Rare Earth	✓	✓	✓
Magnet Temperature Rating -40°F to 302°F (-40°C to 150°C)	✓	✓	✓
Custom Machined from 303 Stainless Steel (316 available)	✓	✓	✓
Centering Fins			
- Enables Easy Threading		✓	✓
- Minimizes Cleaning for Reinstall		✓	✓
- Saves Time and \$		✓	✓
Enhancement Rods			
- 3-5 Times More Powerful Force			✓
- Smaller Magnetic Field Allows Components to be Safe - Not Magnetized Closer to the Plug			✓
Thread Diameters	Tube Lengths	Tube Lengths	Tube Lengths
1/2"	2" - 3" - 4"	2" - 3" - 4"	2" - 3" - 4"
3/4"	2" - 3" - 4"	2" - 3" - 4"	2" - 3" - 4"
1"	2" - 3" - 4" - 5" - 6"	2" - 3" - 4" - 5" - 6"	2" - 3" - 4" - 5" - 6"
1-1/4"	2" - 3" - 4" - 5" - 6"	2" - 3" - 4" - 5" - 6"	2" - 3" - 4" - 5" - 6"
1-1/2"	Not Available - Unusable	2" - 3" - 4" - 5" - 6"	2" - 3" - 4" - 5" - 6"
1-3/4"	Not Available - Unusable	2" - 3" - 4" - 5" - 6"	2" - 3" - 4" - 5" - 6"
2"	Not Available - Unusable	2" - 3" - 4" - 5" - 6"	2" - 3" - 4" - 5" - 6"
2-1/2"	Not Available - Unusable	2" - 3" - 4" - 5" - 6"	2" - 3" - 4" - 5" - 6"

Need a custom size, thread or length? Email us Today! filter-mag-plug@filtermag.com

FILTERMAG®

INDUSTRIAL PRODUCTS DIVISION

1-800-FilterMag
www.filtermag.com

FILTER-MAG-PLUGS

ENHANCED MAGNETIC FILTRATION PLUGS

Patent Pending

SOCKET & BOLT HEADS

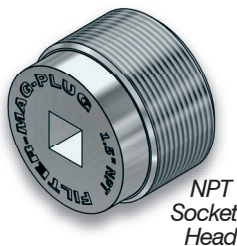


Male/Female Heads available to accomodate every installation

Female Socket Heads
for tight clearances

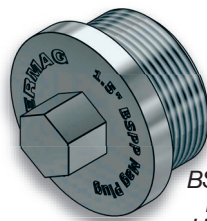


BSPP
Socket
Head

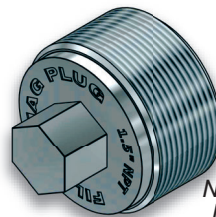


NPT
Socket
Head

Male Bolt Heads

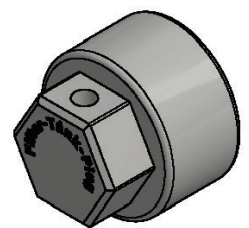


BSPP
Bolt
Head



NPT
Bolt
Head

**Tank Tube
Heads**



STANDARD & CUSTOM SIZES AVAILABLE

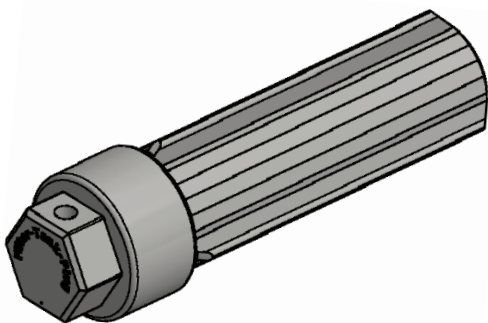
Tank Tube

With FilterMag's 4-Fin Tube

Stainless Steel Tether

Diameters: 0.7" - 0.95" - 1.2" - 1.7" - 2.3" - 2.9"

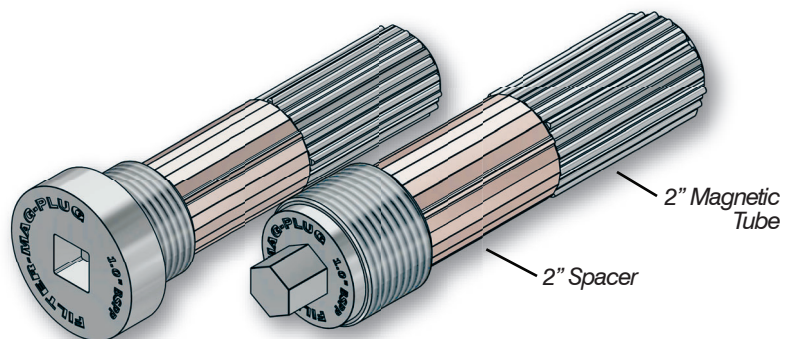
For the bottom of your tanks!



Spacer Lengths:

1" - 1.5" - 2" - 2.5" - 3" - 4"

Minimum 1" spacer



Custom solutions available

Need a custom size, thread or length? Email us Today! filter-mag-plug@filtermag.com